

53TP SERIES | IP00

3-PHASE AC OUTPUT MOUNT SOLID STATE RELAYS

FEATURES

- Three-phase solid-state relay; Ratings 25 A, 50 A per phase @ 48-530 VAC
- Transient protection built in
- LED Input Status indicator standard
- UL recognized

MOUNTING INSTRUCTIONS

Please read all installation instructions before using your 53TP Series Solid State Relay (SSR). Choose one of the two mounting options and follow the instructions.

Mounting on Heat Sink

- Select adequate heat sink (see thermal derating curves).^(A)
- Be sure to use thermal pad or thermal compound between the SSR and the selected heat sink.
- 53TP Series Relay mounting slots have a diameter of 0.2 in (5.0 mm). Four screws are needed (not included) to mount the SSR onto heat sink (See fig. 1). Choose screw length considering the mounting surface and that 53TP Series baseplate thickness is 0.125 in (3.2 mm).
- Before applying full torque, tighten down all 4 screws until they contact the baseplate. Then, tighten them to 20 lb-in (2.2 Nm) starting with one immediately followed by the one in the diagonally opposite corner. After the first 2 screws are completely tightened, proceed tightening the remaining 2 screws.
- For optimal thermal performance heat sink fins should be oriented vertically to promote natural airflow.

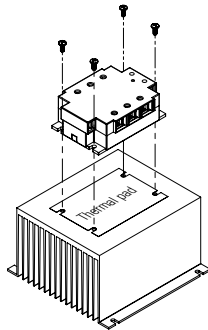


fig. 1 53TP Series SSR mounted on HS053 heat sink

Mounting on Panel

- Locate the panel section on which the 53TP Series SSR will be mounted. Panel mount surface must be clean, bare metal and provide adequate heat sinking capability.^(A)
- Be sure to use thermal pad or thermal compound between the SSR and the panel.
- 53TP Series Relay mounting slots have a diameter of 0.2 in (5.0 mm). Four screws are needed (not included) to mount the SSR onto panel. Choose screw length considering the mounting surface and that 53TP Series baseplate thickness is 0.125 in (3.2 mm).
- Before applying full torque, tighten down all 4 screws until they contact the baseplate.
- Then, tighten them to 20 lb-in (2.2 Nm) starting with one immediately followed by the one in the diagonally opposite corner. After the first 2 screws are completely tightened, proceed tightening the remaining 2 screws.

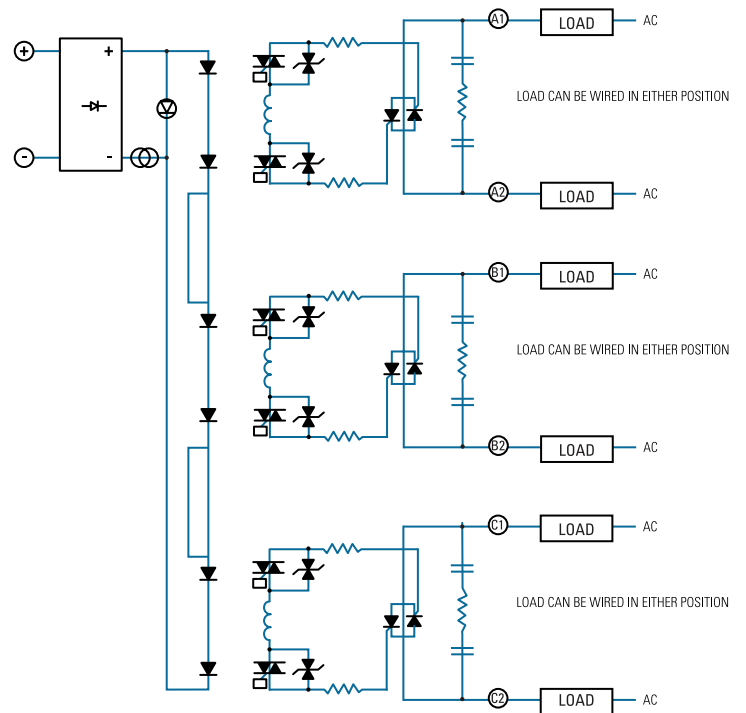
^(A) For maximum ratings use heat sink ratings shown in 53TP series derating curves (see product datasheet).

ORDERING OPTIONS

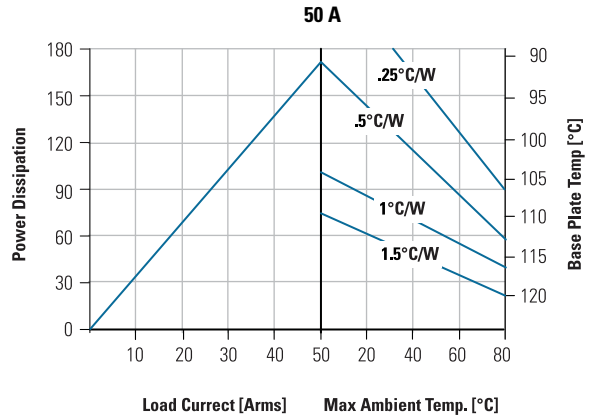
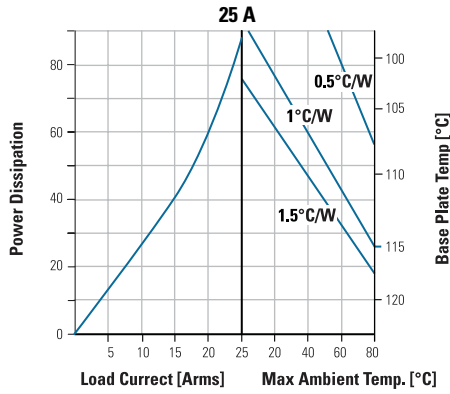
	D	53TP	25	D	H	-10
Control Voltage						
D: DC (4-32V)						
A: AC (90-280V)						
Series	53TP					
Load Current	25: 25 Amps 50: 50 Amps					
Thermal Pad	Blank: Not Included H: Included					
Switching Mode	Blank: Zero Voltage Turn-On -10: Random Turn-On					

D Required for valid part number
53TP For options only and not required for valid part number
25 For options only and not required for valid part number
D Required for valid part number
H For options only and not required for valid part number
-10 For options only and not required for valid part number

WIRING DIAGRAM



DERATING CURVES



Sensata Technologies, Inc. ("Sensata") data sheets are solely intended to assist designers ("Buyers") who are developing systems that incorporate Sensata products (also referred to herein as "components"). Buyer understands and agrees that Buyer remains responsible for using its independent analysis, evaluation and judgment in designing Buyer's systems and products. Sensata data sheets have been created using standard laboratory conditions and engineering practices. Sensata has not conducted any testing other than that specifically described in the published documentation for a particular data sheet. Sensata may make corrections, enhancements, improvements and other changes to its data sheets or components without notice.

Buyers are authorized to use Sensata data sheets with the Sensata component(s) identified in each particular data sheet. HOWEVER, NO OTHER LICENSE, EXPRESS OR IMPLIED, BY ESTOPPEL OR OTHERWISE TO ANY OTHER SENSATA INTELLECTUAL PROPERTY RIGHT, AND NO LICENSE TO ANY THIRD PARTY TECHNOLOGY OR INTELLECTUAL PROPERTY RIGHT, IS GRANTED HEREIN. SENSATA DATA SHEETS ARE PROVIDED "AS IS". SENSATA MAKES NO WARRANTIES OR REPRESENTATIONS WITH REGARD TO THE DATA SHEETS OR USE OF THE DATA SHEETS, EXPRESS, IMPLIED OR STATUTORY, INCLUDING ACCURACY OR COMPLETENESS. SENSATA DISCLAIMS ANY WARRANTY OF TITLE AND ANY IMPLIED WARRANTIES OF MERCHANTABILITY, FITNESS FOR A PARTICULAR PURPOSE, QUIET ENJOYMENT, QUIET POSSESSION, AND NON-INFRINGEMENT OF ANY THIRD PARTY INTELLECTUAL PROPERTY RIGHTS WITH REGARD TO SENSATA DATA SHEETS OR USE THEREOF.

All products are sold subject to Sensata's terms and conditions of sale supplied at www.sensata.com. SENSATA ASSUMES NO LIABILITY FOR APPLICATIONS ASSISTANCE OR THE DESIGN OF BUYERS' PRODUCTS. BUYER ACKNOWLEDGES AND AGREES THAT IT IS SOLELY RESPONSIBLE FOR COMPLIANCE WITH ALL LEGAL, REGULATORY AND SAFETY-RELATED REQUIREMENTS CONCERNING ITS PRODUCTS, AND ANY USE OF SENSATA COMPONENTS IN ITS APPLICATIONS, NOTWITHSTANDING ANY APPLICATIONS-RELATED INFORMATION OR SUPPORT THAT MAY BE PROVIDED BY SENSATA.

Mailing Address: Sensata Technologies, Inc., 529 Pleasant Street, Attleboro, MA 02703, USA.

CONTACT US

Americas
+1 (877) 502 5500
sales.crydom@sensata.com

Europe, Middle East & Africa
+44 (1202) 416170
ssr-info.eu@sensata.com

Asia Pacific
sales.isasia@list.sensata.com
China +86 (21) 2306 1500
Japan +81 (45) 277 7117
Korea +82 (31) 601 2004
India +91 (80) 67920890
Rest of Asia +886 (2) 27602006 ext 2808